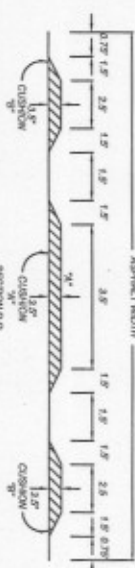
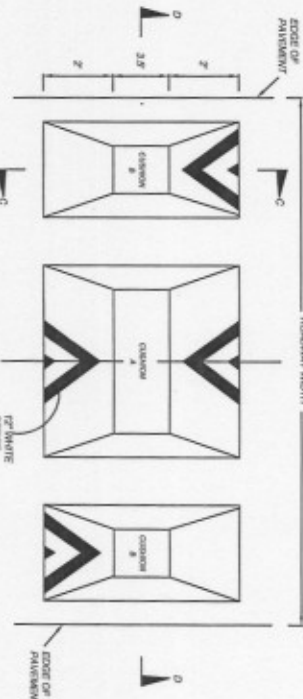


TWO TYPE 2 OBJECT MARKERS OR 2V DOUBLE E SCORERS WITH THE FIRST ONE PLACED 4' FROM EDGE OF PAVEMENT AT 4' OF SPEED TAPER AND SECOND ONE PLACED EQUIDISTANT BETWEEN FIRST ONE AND NEXT LANE FOR USE ONLY ON ROADWAYS WITHOUT MAINTENANCE SECTIONS.



SPEED CUSHION SECTIONS WITH WINGS (SEE TABLE 8)



GENERAL NOTES

1. SPEED CUSHIONS SHALL NOT BE PLACED, IN FRONT OF DRIVEWAYS, OVER, OR CONTAIN MANHOLES, WATER VALVES OR BE LOCATED ADJACENT TO FIRE HYDRANTS.
2. SPEED CUSHIONS SHOULD NOT BE PLACED IN LOCATIONS WHERE THE ROAD IS SHADED FROM AN ISOLATED OVERHANGING TREE OR TREES.
3. IN LOCATING SPEED CUSHIONS, EXISTING STREET LIGHTING SHOULD BE TAKEN ADVANTAGE OF AS MUCH AS POSSIBLE TO INCREASE NIGHTTIME VISIBILITY.
4. WHEN POSSIBLE, SPEED CUSHIONS SHOULD BE PLACED AT PROPERLY LINED FOR NOISE ABATEMENT AND AESTHETIC REASONS.
5. MAINTENANCE OF TRAFFIC FOR SPEED CUSHION CONSTRUCTION SHALL UTILIZE FOOT INDEX 803 OR 607.
6. SIGN DESIGNATIONS REFER TO THE U.S. DEPT. OF TRANSPORTATION FEDERAL HIGHWAY ADMINISTRATION MANUAL OF UNIFORM TRAFFIC CONTROL DEVICES, CURRENT EDITION.
7. ALL PAVEMENT MARKINGS SHALL BE IN ACCORDANCE WITH MUTCD STANDARDS.
8. ASPHALT SHALL CONFORM TO FLORIDA D.O.T. STANDARD SPECIFICATIONS FOR ROAD AND BRIDGE CONSTRUCTION, LATEST EDITION, FOR ASPHALTIC CONCRETE TYPE 3. PACH COAT SHALL BE INCORPORATED IN THE COST OF THE ASPHALT.

| | | | | | |
|---|--|-------------|--|-----------|--|
| HILLSBOROUGH COUNTY PUBLIC WORKS DEPARTMENT | | DESIGNED BY | | DRAWN BY | |
| NEWSPRINGWOOD TRAFFIC CALMING STUDY | | CHECKED BY | | DATE | |
| 6901 E. KENNEDY BLVD. SUITE 200 | | APPROVED BY | | DATE | |
| CRENSHAW LAKE ROAD | | PROJECT NO. | | SHEET NO. | |
| STANDARD SPEED CUSHION | | 141 | | 090 | |
| DATE | | SCALE | | PROJECT | |
| 1/4/1 | | 1:1 | | 090 | |
| DRAWN BY | | CHECKED BY | | DATE | |
| M. WICKERT | | M. WICKERT | | 1/4/1 | |

MICHAEL B. WICKERT